

NFIRS Dashboard Summary Report (All Incidents)

Report Period: 1/1/00 to 1/1/01

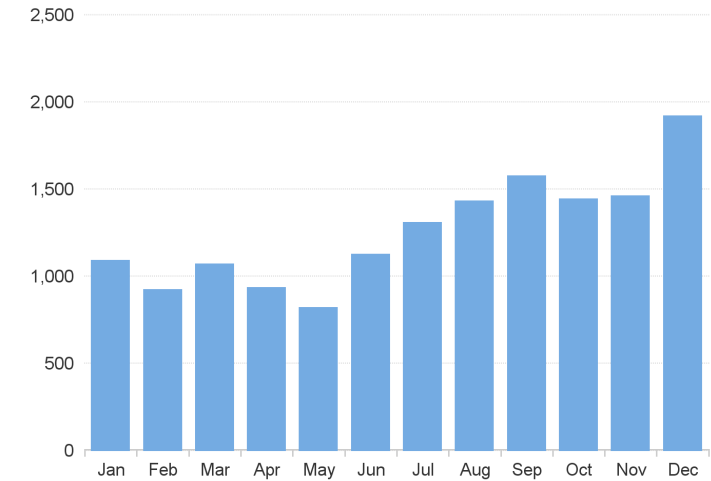
Total Fire Departments **171**

Total Incident Reports **15,063**

Summary By Incident Type Category

Incident Type Category	Total Incidents	Percent	Aid Given	Exposures	Grand Total
Fires (100-173)	2,564	18.4%	499	101	3,168
Overpressure Rupture, Explosion, Overheat Calls (200-251)	39	0.3%	1	0	40
Rescue and EMS Calls (300-381)	6,495	46.6%	190	7	6,701
Hazardous Condition Calls (400-482)	1,560	11.2%	27	11	1,598
Service Calls (500-571)	1,034	7.4%	158	2	1,195
Good Intent Calls (600-672)	972	7.0%	74	7	1,054
False Alarm and False Calls (700-751)	1,133	8.1%	20	4	1,157
Severe Weather and Natural Disaster Calls (800-815)	60	0.4%	3	5	68
Special Incident Type Calls (900-911)	59	0.4%	5	0	64
Unknown or Not Reported	14	0.1%	4	0	18
Grand Total	13,930	100.0%	981	137	15,063

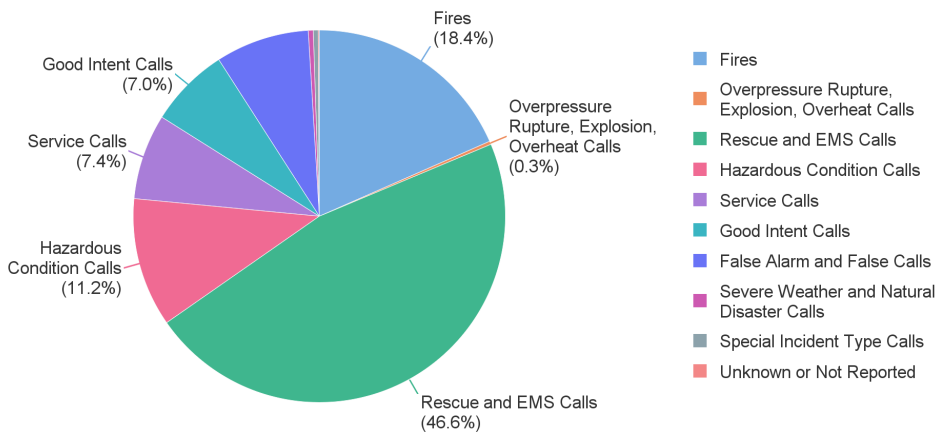
Incident Counts By Month of Year



Monthly Incident Counts

Jan	Feb	Mar	Apr	May	Jun	Jul	Aug	Sep	Oct	Nov	Dec	Grand Total
1,087	919	1,067	930	816	1,122	1,306	1,428	1,571	1,441	1,458	1,918	15,063

Incident Type Category Summary



Percent Valid

99.9%

Percent Released

96.2%

Incident Valid Status Summary

Incident Valid Status	Total	Percent
Valid	15,061	100.0%
Invalid	2	0.0%
No Activity	0	0.0%
Grand Total	15,063	100.0%

Incident Release Status Summary

Incident Valid Status	Total	Percent
Released	14,505	96.3%
Unreleased	558	3.7%
Grand Total	15,063	100.0%

Fire Service Injuries

29

Fire Service Deaths

0

Fire Service Casualty Summary

Fire Service Casualties	Fire-Related	Non-Fire	Grand Total
Fire Service Injuries	23	6	29
Fire Service Deaths	0	0	0
Total Fire Service Casualties	23	6	29

NFIRS Dashboard Summary Report (Fire Incidents)

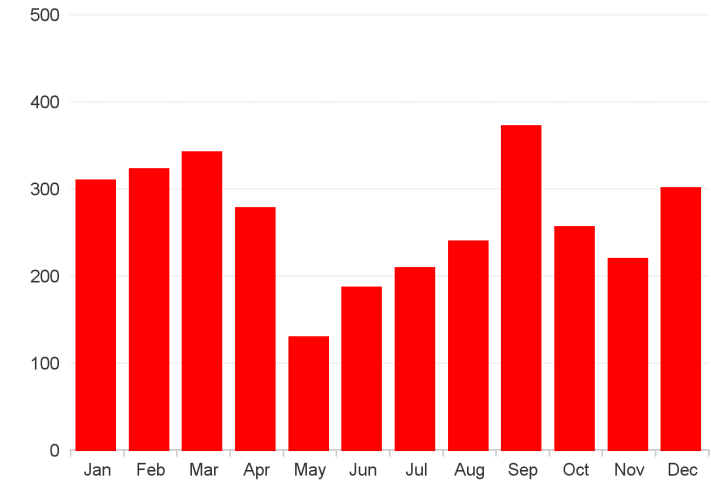
Report Period: 1/1/00 to 1/1/01

Total Fire Incidents 3,168

Summary By Incident Type Category

Incident Type Group	Total Incidents	Percent	Aid Given	Exposures	Grand Total
Structure Fires (111-118)	682	26.6%	276	34	994
Fires in Mobile Property Used as a Fixed Structure (120-123)	27	1.1%	12	2	42
Mobile Property (Vehicle) Fires (130-138)	479	18.7%	25	25	529
Natural Vegetation Fires (140-143)	796	31.0%	143	29	969
Outside Rubbish Fires (150-155)	329	12.8%	13	4	346
Special Outside Fires (160-164)	61	2.4%	6	2	69
Cultivated Vegetation, Crop Fires (170-173)	22	0.9%	7	1	30
Fires, Other (100)	168	6.6%	17	4	189
Grand Total	2,564	100.0%	499	101	3,168

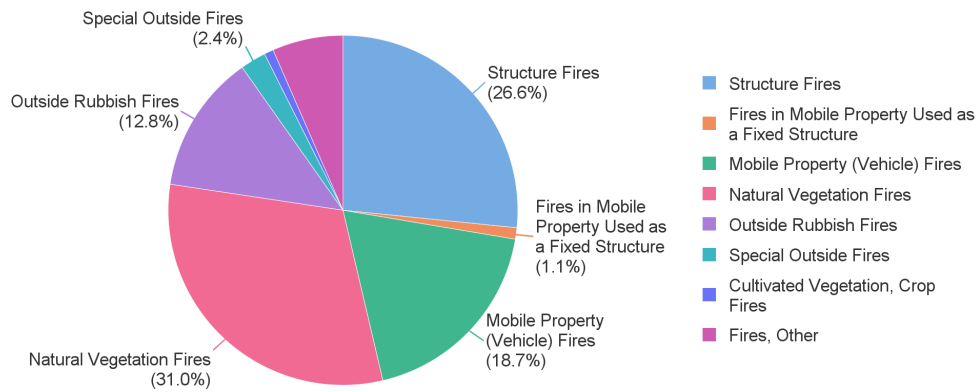
Fire Incident Counts By Month of Year



Monthly Incident Counts

Jan	Feb	Mar	Apr	May	Jun	Jul	Aug	Sep	Oct	Nov	Dec	Grand Total
310	323	342	278	130	187	209	240	372	256	220	301	3,168

Fire Incident Type Category Summary



Fire Dollar Loss Summary

Dollar Loss	Grand Total
Total Fire Property Loss	\$8,960,306
Total Fire Contents Loss	\$3,132,516
Total Fire Dollar Loss	\$12,092,822

Total Fire Dollar Loss
\$12,092,822

Civilian Fire Injuries

25

Civilian Fire Deaths

6

Civilian Fire Casualty Summary

Civilian Fire Casualties	Grand Total
Civilian Fire Injuries	25
Civilian Fire Deaths	6
Total Civilian Fire Casualties	31

Parameters

*** Query Name:Incidents ***

** Query Properties:

Universe:NFIRS Incidents
Last Refresh Date:1/1/25 3:07 PM
Last Execution Duration: 4
Number of rows: 15,063
Refreshable: ON
Retrieve Duplicate Rows: ON
Retrieve Empty Rows: OFF
Max Retrieval Time (s): /
Max Rows Retrieved: /
Query Stripping: OFF

Result Objects: State, Fire Department ID, Fire Department Name, Incident Date, Incident Number, Exposure, Incident Date - Month of Year, Incident Year, Incident Release Status, Incident Valid Status, Aid Given, Received, None or Other Flag Code, Number of Incidents, Number of Aid Given Incidents, Number of Exposure Incidents, Number of No Activity Incidents, Number of Invalid Incidents, Number of Valid Incidents, Incident Type Code, Incident Type Code (National), Incident Type Code (Group), Incident Type Code (Category), Incident Type Description, Number of Released Incidents, Number of Unreleased Incidents, Property Loss, Contents Loss, Total Loss, Fire Service Injuries, Fire Service Fatalities, Non Fire Service Injuries, Non Fire Service Fatalities

Parameter Prompts Summary

Enter value(s) for NFIRS Group: (Optional)
Enter value(s) for State: MO
Enter From Date: 01/01/2000
Enter To Date: 01/01/2001
Enter value(s) for Incident Valid Status: Invalid;Valid
Enter value(s) for NFIRS Version: 4.1;5.0
Enter value(s) for Incident Release Status: Released;Unreleased
Enter value(s) for Fire Department ID: All Fire Departments
Enter value(s) for Fire Department Active Status: Active

USFA NFIRS DATA DISCLAIMER:

Caution: NFIRS is not a repository of all fires or incidents that occur in the United States. NFIRS is a voluntary system, and it includes only those fire and other incidents reported to the system by fire departments that participate in NFIRS. Additionally, not all States participate in NFIRS each year, and not all fire departments that report to NFIRS within a State necessarily report all of their fire incidents. Also, some fire departments that report fire incidents do not report associated casualties or estimated dollar losses. States and/or fire departments that report in one particular year may not report to NFIRS the following year. Thus, NFIRS is not representative of all fires and other types of incidents that occur in the United States and is not a census of fire incidents or casualties.